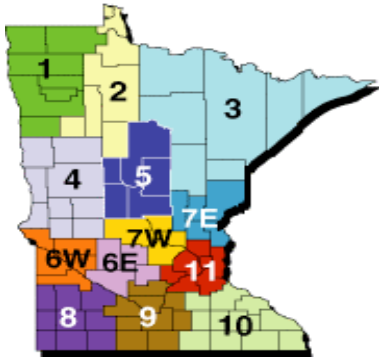


## 2005-2006 Early Childhood Special Education District Data Profile

<b>District #</b>	<b>District</b>	<b>10/1/05 Enrollment: K - 12</b>	<b>ECFE Census</b>
186	PEQUOT LAKES	1,535	480
<b>Special Ed Administrative Unit</b>		<b>Region</b>	<b>Strata*</b>
PAUL BUNYAN SPECIAL ED COOP		5	4



**Regions\*\***

\*\* For the purpose of this profile: Regions 6E + 6W = Region 6; Regions 7E + 7W = Region 7.

**\*Key to Strata:** 1=Mpls/St. Paul; 2=Suburbs  
3=Greater MN > 2,000 students; 4=Greater MN <2,000 students

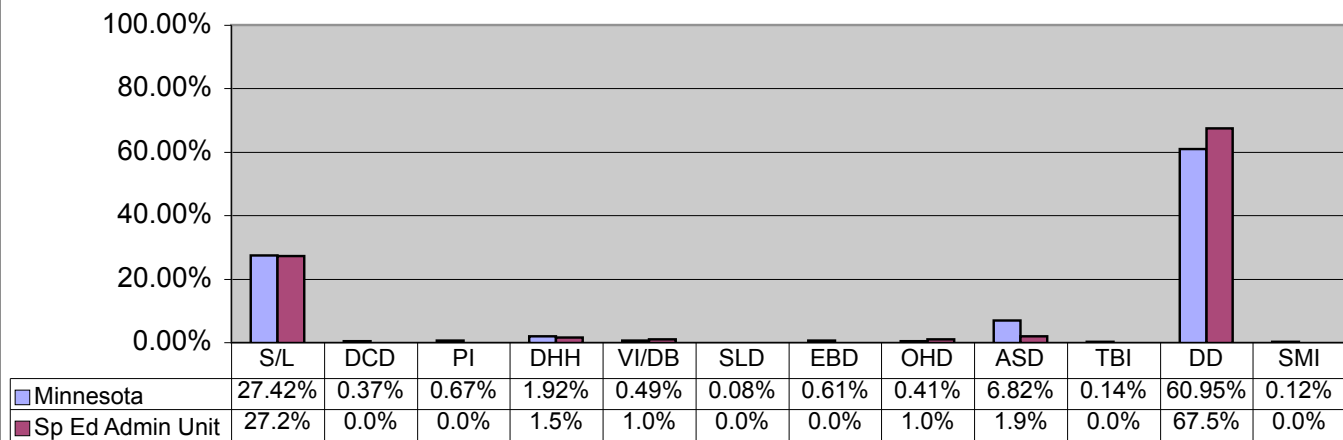
**Children served by age group on 12/1 of each year**

Age	2001	2002	2003	2004	2005
0	0	0	0	2	0
1	0	2	0	0	2
2	1	1	3	2	2
3	1	2	2	4	6
4	4	3	2	3	7
5	2	8	1	2	0
<b>Total</b>	8	16	8	13	17

The above counts include preschool children who are residents of the school district. The counts DO NOT include children who are enrolled in kindergarten.

**Categorical Eligibility:** Children under age 7 may receive ECSE services if they are eligible under Developmental Delay or any categorical criteria. To assure that each child is appropriately identified, evaluation teams must consider all possible disability categories when developing an evaluation plan and determining eligibility. The use of multiple categories is an indicator of that process.

**Use of Multiple Disability Categories to Determine Eligibility for Preschool-Aged Children:  
Statewide & Special Education Administrative Unit Data Comparison**



**Key to Disability Categories:**

S/L = Speech/Language  
DCD = Developmental Cognitive Disability  
PI = Physically Impaired  
DHH = Deaf/Hard of Hearing  
VI/DB = Visually Impaired + Deaf/Blind  
SLD = Specific Learning Disability

EBD = Emotional & Behavioral Disorder  
OHD = Other Health Disability  
ASD = Autism Spectrum Disorder  
TBI = Traumatic Brain Injury  
DD = Developmental Delay  
SMI = Severely Multiply Impaired

The Individuals with Disabilities Education Act of 2004 requires states to report annually to the federal government on State Performance Plan (SPP) indicators and to publicly report the status of local districts on these indicators. This ECSE Data Profile displays indicators from Part B (3-21) and Part C (birth - 2) and allows districts to compare their performance with that of the state as a whole, other districts within their geographic region, other districts of similar size and to established performance targets and national data..

**Part C SPP Indicator 5: The percent of infants and toddlers birth to age one with Individual Family Service Plans (IFSPs)**

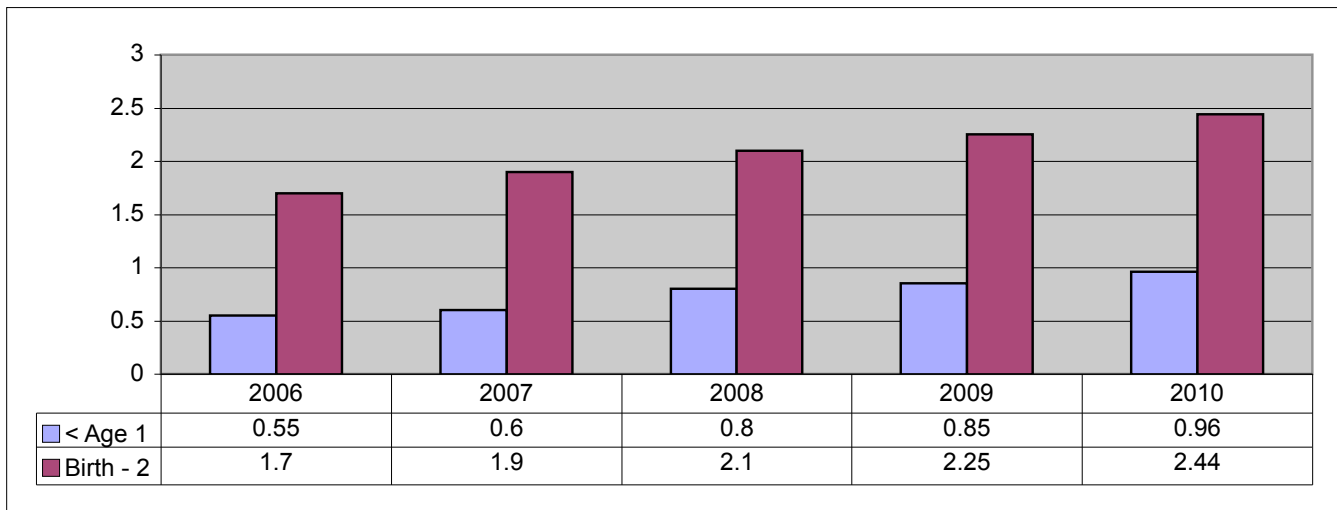
	State	Target	Region	Strata	District	National
Percent served on 12/1/05	0.46	0.45	0.44%	0.60%	0.00%	0.99
Number of infants in the general population	68,753	n/a	2,026	13,581	96	4,199,000

**Part C SPP Indicator 6: The percent of infants and toddlers birth to age three with IFSPs**

	State	Target	Region	Strata	District	National
Percent served on 12/1/05	1.56	1.57	1.53%	1.72%	1.39%	2.4
Number of children in the general population	205,482	n/a	5,998	41,683	288	12,240,000

**Note:** Data for Part C SPP Indicators 5 and 6 is derived from 12/1/05 child count submitted by districts and Early Childhood Family Education census data submitted annually by each district's community education program

**Future Performance Targets for Part C SPP Indicators 5 & 6: 2006 - 2010**



**Part C SPP Indicator 7: The percent of eligible infants and toddlers for whom an evaluation and assessment and initial IFSP team meeting were conducted within Part C's 45-day timeline\*.**

\*Data for this indicator is taken from the Minnesota Automated Reporting Student System (MARSS). The 45-day timeline begins when the referral is received by the central point of entry for the local system and ends the day of the IFSP team meeting. Districts were required to account for those evaluations that were untimely. The percentages reported below include timely evaluations and those that were untimely due to circumstances reported to be outside the control of the district.

State	Target	Region	Strata	Sp. Ed Admin Unit
83.40%	100%*	88.7%	89.3%	100.0%

\*Indicator 7 is a compliance indicator and therefore has a target of 100%

\*\*No evaluations resulting in eligibility were reported during the year.

**Part C SPP Indicator 1: The percent of infants and toddlers with IFSPs who receive the services on their IFSPs in a timely manner.**

\*Data for this indicator is taken from MARSS for the reporting year July 1, 2005 - June 30, 2006.

**Note:** For purposes of the SPP, "timely" was defined by the ICC as 30 or fewer days from the date of the IFSP team meeting

State	Target*	Region	Strata	Sp. Ed Admin Unit
91.1%	100.0%	92.3%	92.2%	80.0%

\*Compliance target: Must be 100%.

**Part C SPP Indicator 2: The percent of infants and toddlers with IFSPs who receive their early intervention services primarily at home or in community settings**

Data for the indicator is taken from the 12/1/05 child count submitted by districts

**Note:** Includes MARSS settings

12 & 13.

12 = Program for children without disabilities

13 = Home

Age	State	Target	Region	Strata	Sp. Ed Admin Unit
<1	97.5%	n/a			
1-2	96.5%	n/a			
2-3	85.2%	n/a			
0-3	90.3%	89.5%	88.0%	90.1%	82.9%

**Part B SPP Indicator 6: The percent of preschool children with IFSPs who receive special education and services in settings that include typically developing peers.**

Data for the indicator is taken from the 12/1/05 child count submitted by districts

**Note:** Includes MARSS settings

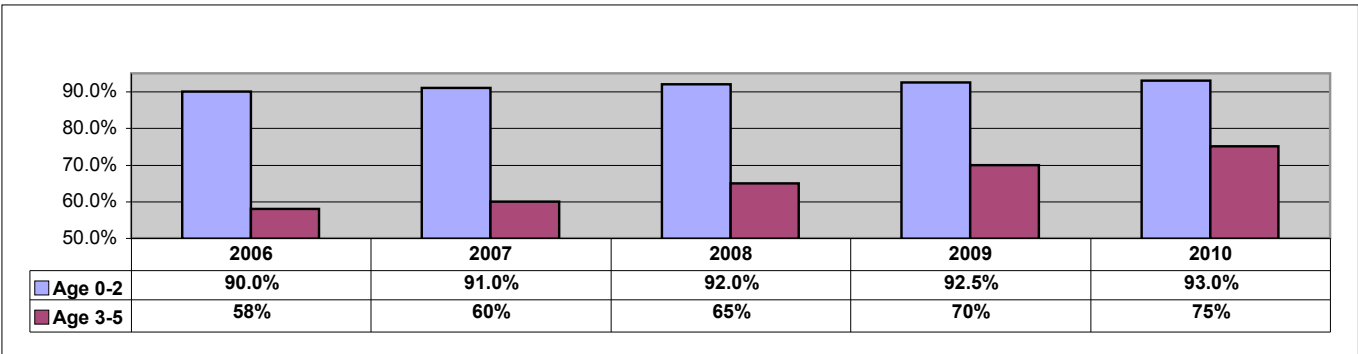
01, 03 and 04

01 = Program designed for children without disabilities such as Head Start, child care or preschool program.

03 = Home

04 = Part time spent in program designed for children without disabilities and part time spent in ECSE classroom.

State	Target	Region	Strata	Sp. Ed Admin Unit
50.1%	58.0%	67.4%	63.9%	62.8%



**Part C SPP Indicator 8: Percent of all children exiting Part C who receive timely transition planning to support the child's transition to preschool and other community supports by their third birthday, including:**

- A. IFSP with transition steps and services
- B. Notification to local education agency (LEA)
- C. Transition conference\*, if child potentially eligible for Part B

State	Target	Sp. Ed Admin Unit
80.04%	100%	100.0%
100%	100%	100%
30.35%	100%	100.0%

**Note:** Data for this indicator is reported directly by districts and verified through compliance monitoring activities.

\*Federal law requires the transition conference to be held at least 90 days but not more than 9 months prior to a child's third birthday. Many districts reported holding transition conferences outside the window of time specified in the federal law,

**Part B SPP Indicator 12: The percent of children referred from Part C prior to age 3 who are found eligible for Part B and have an Individual Education Plan (IEP) developed and implemented by their third birthdays.**

All children turning 3 continued to receive services except those exited through a re-evaluation process or withdrawn by parents.

State	Target	Spec Ed Admin Unit
100%	100%	100%

**Part C SPP Indicator 4 & Part B SPP Indicator 7: Percent of infants and toddlers and preschool children who demonstrate improved:**

- A. Positive social-emotional skills, including social relationships
- B. Acquisition and use of knowledge and skills
- C. Use of appropriate behavior to meet their needs

Part C: Minnesota Status at Entrance		Part B: Minnesota Status at Entrance	
% At Age Level	% Below Age Level	% At Age Level	% Below Age Level
32.3%	67.7%	23.10%	76.90%
22.8%	77.2%	21.20%	78.80%
26.6%	73.4%	35.80%	64.20%

These are new indicators. States were required to collect and report data on the developmental status of children at the time they began receiving services under Part C and Part B of IDEA, respectively. That data is displayed above. States must report progress data and performance targets in February 2008.

Future values for reporting the developmental progress made while receiving Part C or preschool special education services are:

1. Maintained an age-appropriate level of development
2. Attained an age-appropriate level of development
3. Made sufficient progress to narrow the gap between child's developmental status and typical development without attaining an age appropriate level of development.
4. Made progress but did not narrow the gap between the child's developmental and that of same age peers.
5. Did not make progress.

**Note:** Data for these indicators is collected annually from districts. The Child Outcome Summary Form (COSF) is used by which district teams to convert data from multiple sources into reportable scores.

**Part C SPP Indicator 4: The percent of families participating in Part C who report that early intervention services have helped the family**

- A. Know their rights;
- B. Effectively communicate their children's needs;
- C. Help their children develop and learn.

State	Target	Region	Strata
74.2%	n/a	52.4%	63.0%
82.1%	n/a	66.7%	70.4%
86.8%	n/a	81.0%	75.9%

**Note:** Data for this indicator is obtained through a survey distributed by district staff to families who have received services for six months or more and who have exited Part C, most often because their child has turned three.

